

FreeNAS® Mini E and Mini XL+ Basic Setup Guide

Version 1.4



Contents

1 FreeNAS® Mini E and Mini XL+	1
1.1 Become Familiar with the FreeNAS® Mini	2
1.2 Installing Hard Drives	3
1.3 Removing Drive Trays	3
1.4 MiniXL+ SSD Bay	4
1.5 Connect Network and Power Cables	5
1.6 Logging into FreeNAS®	5
1.7 Additional Resources	6
1.7.1 Contacting iXsystems	6

Copyright © 2020 iXsystems, Inc. All rights reserved. All trademarks are the property of their respective owners.

TrueNAS® units are carefully packed and shipped with trusted carriers to arrive in perfect condition. If there is any shipping damage or any parts are missing, please take photos and contact iXsystems support immediately at support@ixsystems.com or 855-GREP4-iX (855-473-7449) or 408-943-4100.

Please locate and record the hardware serial numbers on the back of each chassis for quick reference.

1 FreeNAS® Mini E and Mini XL+

The FreeNAS® storage appliance is built to support all the features of FreeNAS®. The Mini has four hot-swappable hard drive bays, while the Mini XL+ has eight.

Carefully unpack the shipping box and locate these components:



1. One FreeNAS® Mini-E

or

2. One FreeNAS® Mini XL+

3. Four or eight drive trays with purchased hard drives or fillers

4. One SSD tray with purchased SSD or filler and 2.5" drive screws

5. Two Ethernet cables

6. One bag of HDD screws

7. One power cord

8. One set of keys

The drive bay door can be locked for added security. To lock the door, insert one of the door keys (8) in the lock and turn the key clockwise ninety degrees.



1.1 Become Familiar with the FreeNAS® Mini



1. The Mini-E has four hot-swap hard drive drive bays. There are two USB 2.0 ports on the Mini-E front panel (9).

10. The Mini XL+ has eight bays, with an additional low-profile bay for a caching SSD. The Mini XL+ has one USB 3.0 port (8) and one USB 2.0 port (9).

Both systems have:

- 2. Power Button
- 3. Reset Button
- 4. Power Indicators
- 5. Disk Activity Light
- 6. Network Activity Indicator
- 7. Unit Identification Indicators



Both systems have back-panel power connectors (1), VGA video connectors (4), and IPMI remote management network ports (6).

The Mini-E has a locate/ID button (2), serial port (3), four GbE network ports (5), and one USB 3.0 port (7).

The Mini-XL+ has two USB 2.0 ports (8) and two 10GbE network ports (9).

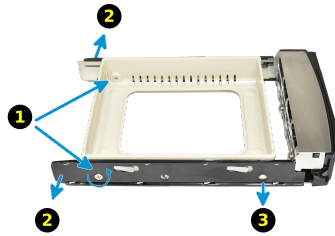
The warranty is not affected by removing or cutting the *Tamper Resistant* sticker to remove the case.

1.2 Installing Hard Drives

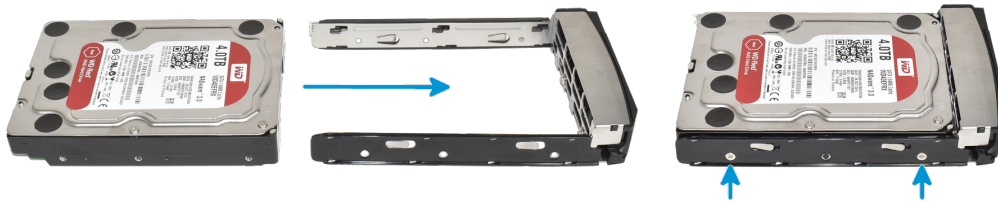
The FreeNAS® Mini and Mini XL support hard drives up to 10 TiB. Drives designed for Network Attached Storage (NAS) are required. These drives run cooler and quieter than desktop drives. NAS hard drives are available direct from iXsystems or retailers.

When ordered without hard drives, drive trays are shipped with filler inserts to protect them. If not all bays will be filled with drives, keep the fillers in the empty trays to protect them.

To mount a hard drive in a tray, remove the two rear screws holding the filler (1). Gently spread both sides of the tray away from the filler (2) until the pins release (3), then remove the filler.



Mount the hard drive in the tray with four screws.



Starting with the bottom bay, gently insert a tray into a drive bay until it stops. Swing the latch closed until it locks. Repeat for all hard drives to be mounted. Load trays with fillers into any remaining empty bays.



1.3 Removing Drive Trays

If a drive tray must be removed to replace a drive, release the latch by pushing the large circular button to the right. Swing the latch to the left to eject the tray, then pull outwards on the latch to begin sliding the tray out. Grip the top and bottom of the tray and gently remove it.



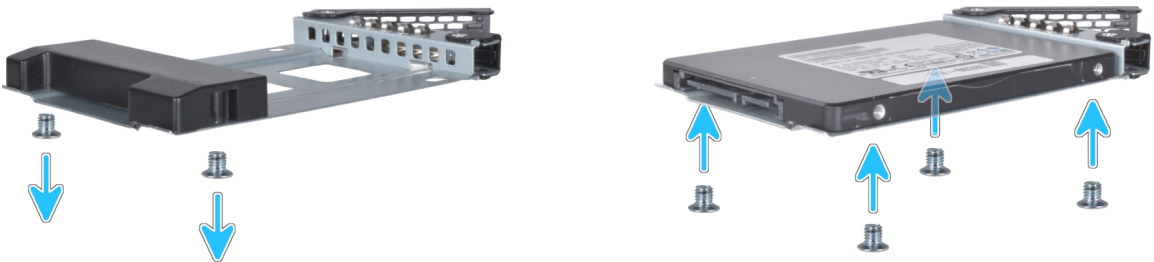
1.4 Mini XL+ SSD Bay

The Mini XL+ has an additional low-profile bay for a cache SSD.

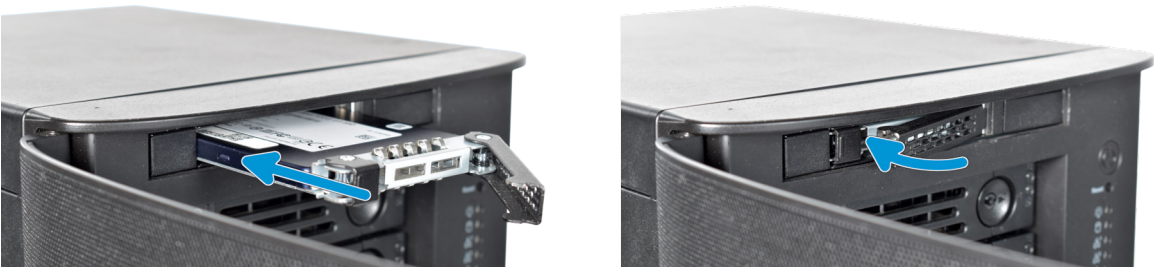
Release the latch by sliding the button to the left **(1)**. Gently swing the latch to the right **(2)**, then slide the tray out.



To add an SSD, unscrew the two attachment screws from the SSD tray underside and remove the SSD tray filler. Attach the cache SSD to the tray with four screws from the bag labeled 2.5" through the bottom of the tray.



Gently insert the tray into the bay until it stops and the latch is nearly shut. Swing the latch closed until it locks.



1.5 Connect Network and Power Cables

Connect the network cable to the router or switch and to the top Gigabit network port. Plug the power cable into the FreeNAS® Mini and a power outlet.

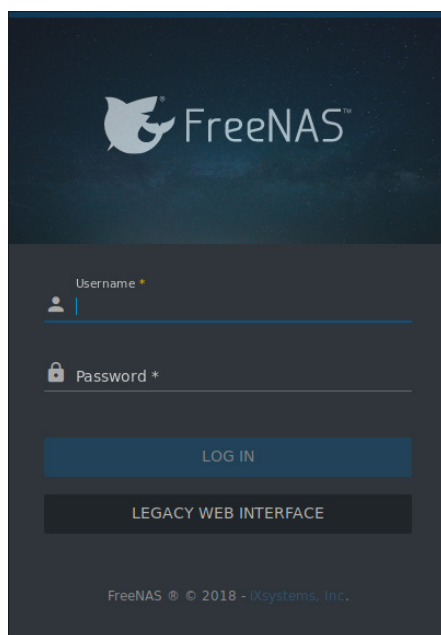
If remote management through IPMI is desired, connect a network cable to the IPMI network port. A VGA monitor and USB keyboard can be connected for console access, but are not required.



1.6 Logging in to FreeNAS®

FreeNAS® uses the Multicast DNS service, also known as Bonjour or mDNS, to make the system accessible on most networks without additional setup.

Run a web browser on another computer on the same network. Open the FreeNAS® web interface by typing **freenas.local** or the IP address of the FreeNAS® Certified system into the browser address bar and pressing Enter.



Log in with:

Username: **root**

Password: **abcd1234**

Warning:

Change the **root** password in Account --> Users after logging in to increase system security.

When more than one FreeNAS® device is connected to the network, mDNS can experience name conflicts. Give each FreeNAS® device a unique hostname like **freenas1.local** and **freenas2.local** to avoid this problem. The hostname is changed in Network --> Global Configuration --> Hostname in the FreeNAS® web interface.

1.7 Additional Resources

The FreeNAS® User Guide has complete software configuration and usage instructions. It is available by clicking Guide in the FreeNAS® web interface or going directly to:

<https://www.ixsystems.com/documentation/freenas/>

Additional guides, datasheets, and knowledge base articles are available in the iXInformation Library at:

<https://www.ixsystems.com/library/>

The FreeNAS® forums provide an opportunity to interact with other FreeNAS® users and to discuss their configurations. The forum is available at:

<https://forums.freenas.org/index.php>

1.7.1 Contacting iXsystems

For assistance, please contact iXSupport:

Contact Method	Contact Options
Web	https://support.ixsystems.com
Email	support@ixsystems.com
Telephone	Monday-Friday, 6:00AM to 6:00PM Pacific Standard Time: <ul style="list-style-type: none">• US-only toll-free: 855-473-7449 option 2• Local and international: 408-943-4100 option 2
Telephone	Telephone After Hours (24x7 Gold Level Support only): <ul style="list-style-type: none">• US-only toll-free: 855-499-5131• International: 408-878-3140 (International calling rates will apply)