

FreeNAS® Mini E and E+ Out of Band Management

Version 1.0



Contents

1 Out of Band Management	1
1.1 Open the BIOS	1
1.2 IPMI Options	2
1.3 DHCP Address Configuration	3
1.4 Configuring a Static IP Address	4
1.5 The Graphical IPMI	5
2 Contacting iXsystems	6

Copyright © 2020 iXsystems, Inc. All rights reserved. All trademarks are the property of their respective owners.

1. Out-of-Band Management

Out of Band Management enables remote control of the system. Administrative control options include powering the system on and off, resetting the configuration, and viewing the system log. Before attempting to configure FreeNAS® for out-of-band management, ensure that the out-of-band management port is connected to an appropriate network. Refer to the guide included with the FreeNAS® Mini for detailed instructions on how to connect to a network.

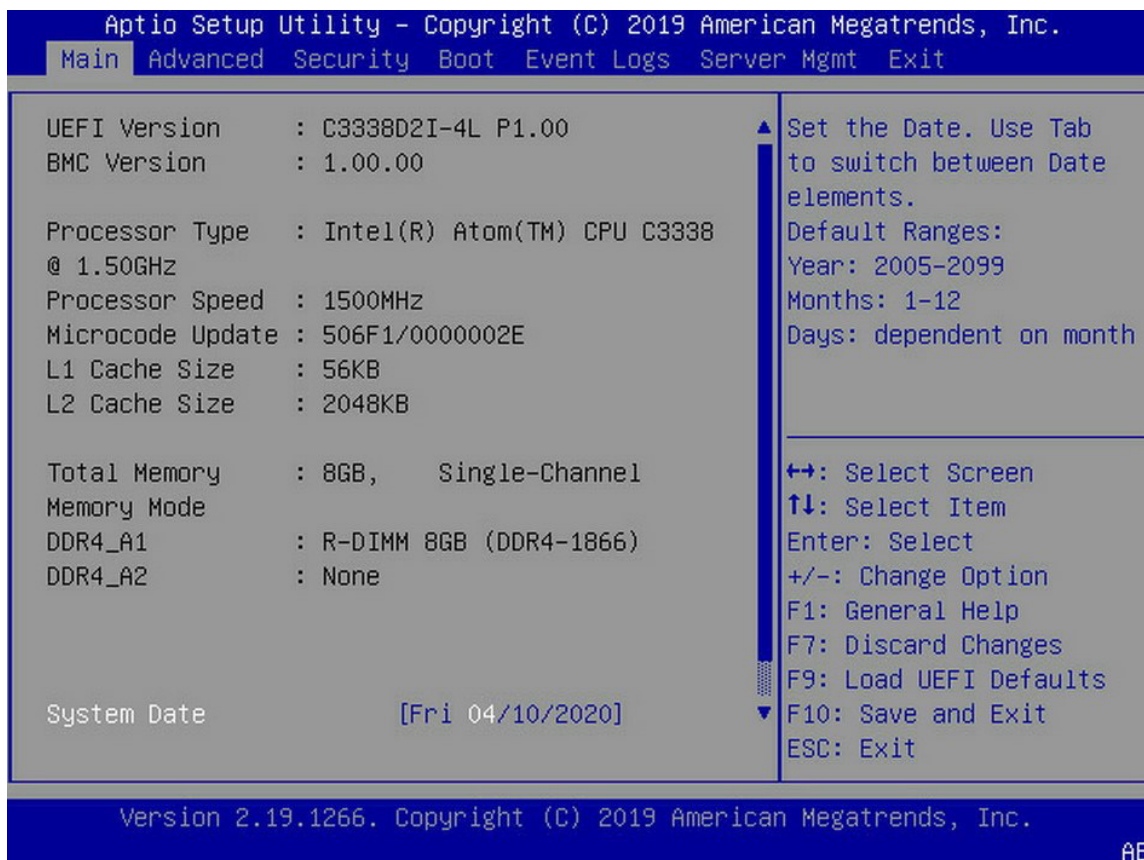
Connect the out-of-band management port before powering on the FreeNAS® Mini.

This section contains instructions for configuring out-of-band management from the BIOS if needed. The FreeNAS web interface also has IPMI configuration options. See the IPMI section of the FreeNAS User Guide for more details.



1.1 Open the BIOS

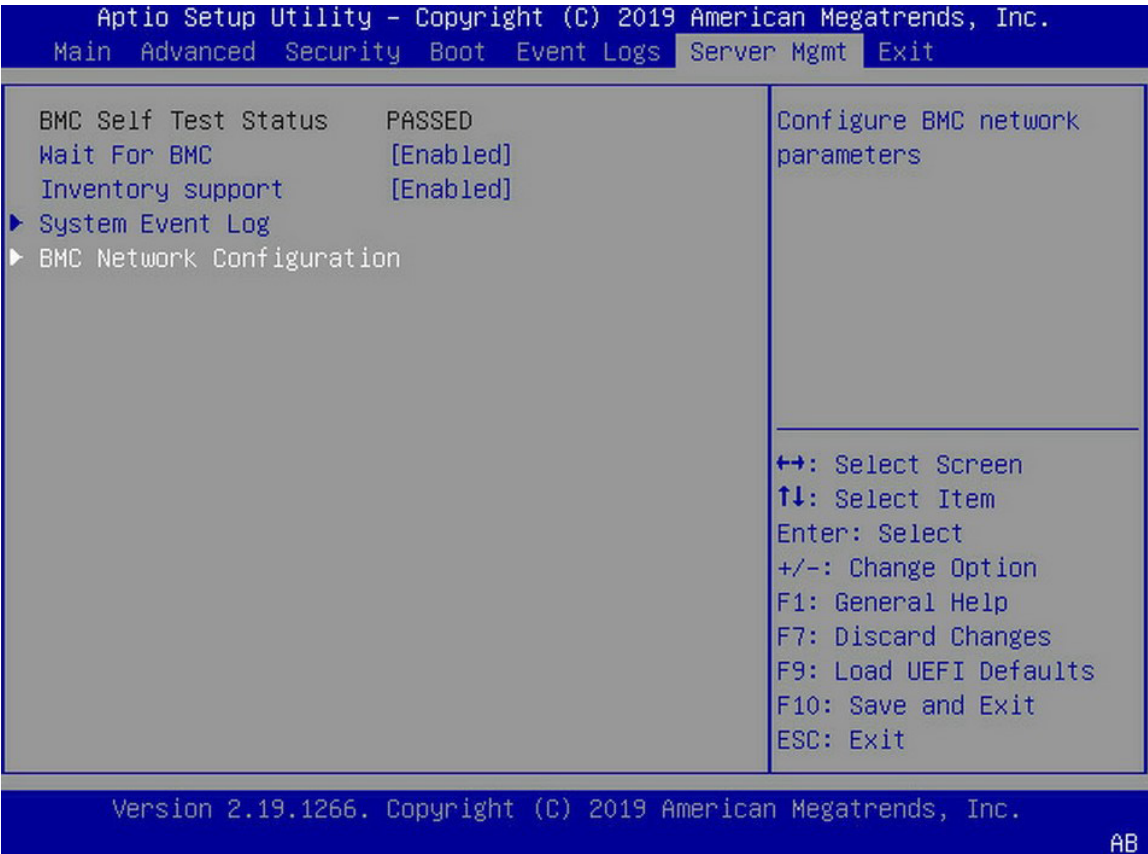
Press **Delete** at the splash screen while the FreeNAS® Mini is booting to access the system BIOS.



Initial BIOS Screen

1.2 IPMI Options

Select the **Server Mgmt** tab and open the **BMC Network Configuration** options



Server Mgmt Page

1.3 DHCP Address Configuration

Set **Out of band Access** to **Enabled**. Set the **Manual setting IPMI** to **No** to assign the out-of-band management IP address dynamically. The menu shows any IP addresses that have been assigned by DHCP.

Aptio Setup Utility - Copyright (C) 2019 American Megatrends, Inc.	
Server Mgmt	
BMC Network Configuration	
BMC Out of band Access	[No Change]
Out of band Access	Enabled
Lan channel (Failover)	
Manual setting IPMI	[No]
LAN Configuration	Static
address source	
Station IP address	10.215.3.213
Current subnet mask	255.255.255.128
Current MAC address	d0-50-99-e3-5e-b0
Current router IP address	10.215.3.129
Enabled/Disabled BMC Out of band Access	
↔: Select Screen	
↑↓: Select Item	
Enter: Select	
+/-: Change Option	
F1: General Help	
F7: Discard Changes	
F9: Load UEFI Defaults	
F10: Save and Exit	
ESC: Exit	

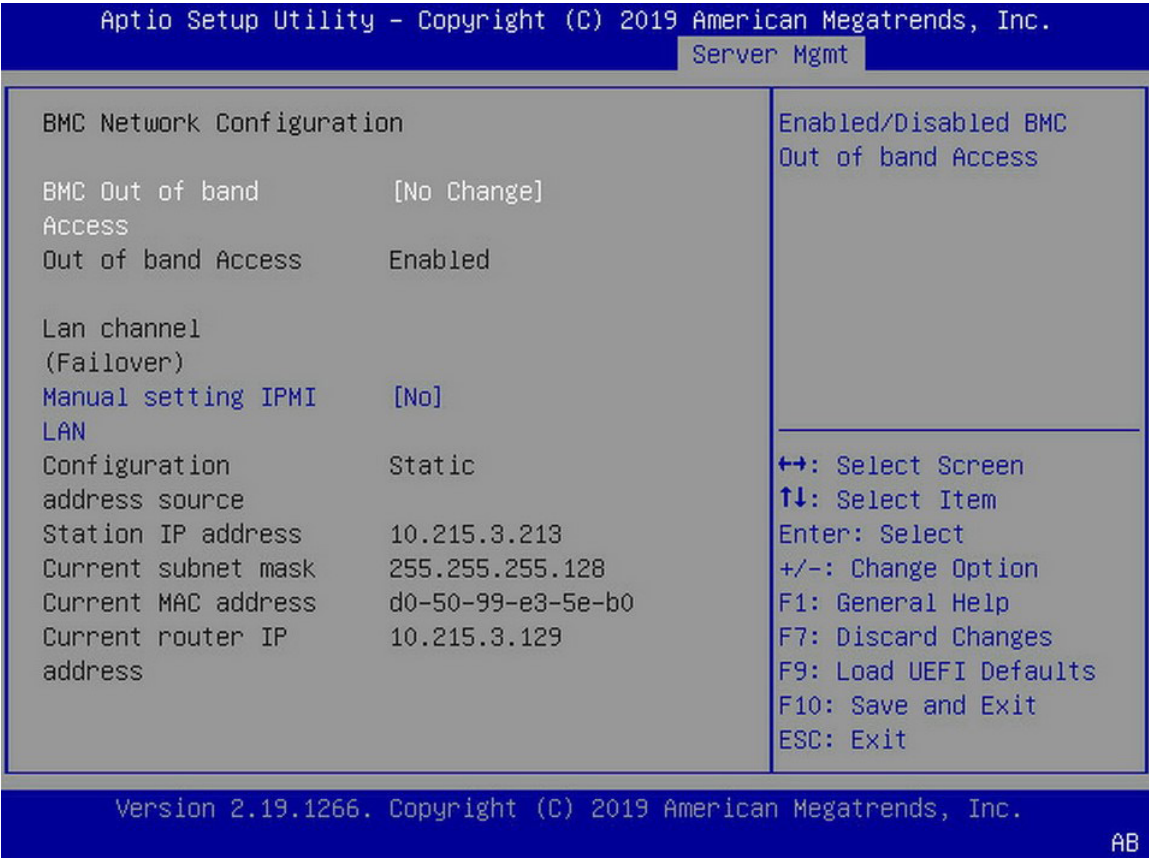
Version 2.19.1266. Copyright (C) 2019 American Megatrends, Inc.

AB

Configuring DHCP

1.4 Configuring a Static IP Address

Set **Out of band Access** to **Enabled**. Set the **Manual setting IPMI** to **Yes** to manually assign the out-of-band management IP address. Enter the correct values for the fields, **Station IP address**, **Current subnet mask**, and **Current router IP** to assign a static IP address for out-of-band management.

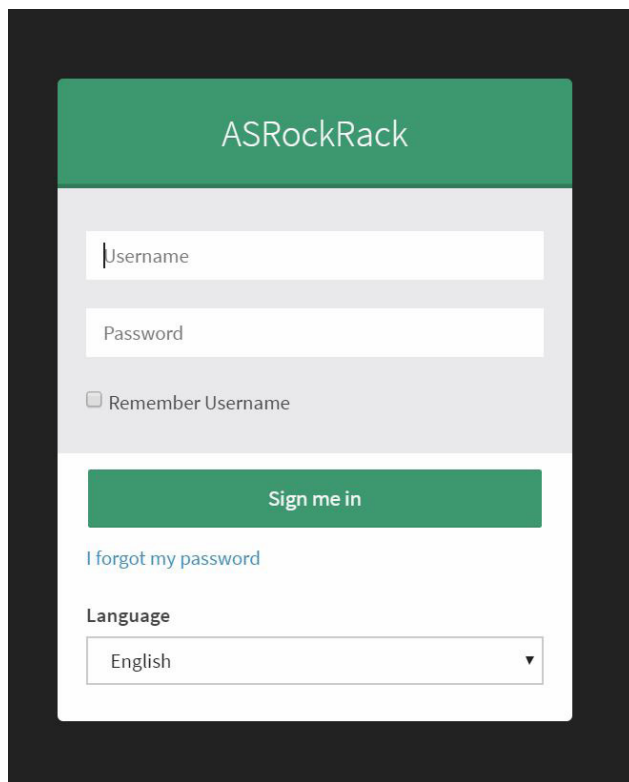


Configuring a Static IP Address

Save the changes, exit the BIOS, and allow the system to boot.

1.5 The Graphical IPMI

Connect to the FreeNAS® Mini out-of-band management port by entering the IP address into a web browser from a system that is either within the same network or which is directly wired to the array. A login prompt appears.

The image shows a web browser window displaying the ASRockRack login page. The page has a dark green header with the text "ASRockRack" in white. Below the header, there is a light gray section containing a "Username" input field, a "Password" input field, and a checkbox labeled "Remember Username". Below this section is a dark green button with the text "Sign me in" in white. Under the button, there is a blue link that says "I forgot my password". At the bottom, there is a "Language" label and a dropdown menu currently showing "English". The entire login form is centered on a black background.

Log in using the default **Username** of **ADMIN** and the default **Password** of **ADMIN**.

See the IPMI section in the FreeNAS® User Guide for instructions to change the administrative password.

2 Contacting iXsystems

For assistance, please contact iXSupport:

Contact Method	Contact Options
Web	https://support.ixsystems.com
Email	support@ixsystems.com
Telephone	Monday-Friday, 6:00AM to 6:00PM Pacific Standard Time: <ul style="list-style-type: none">• US-only toll-free: 855-473-7449 option 2• Local and international: 408-943-4100 option 2
Telephone	Telephone After Hours (24x7 Gold Level Support only): <ul style="list-style-type: none">• US-only toll-free: 855-499-5131• International: 408-878-3140 (International calling rates will apply)